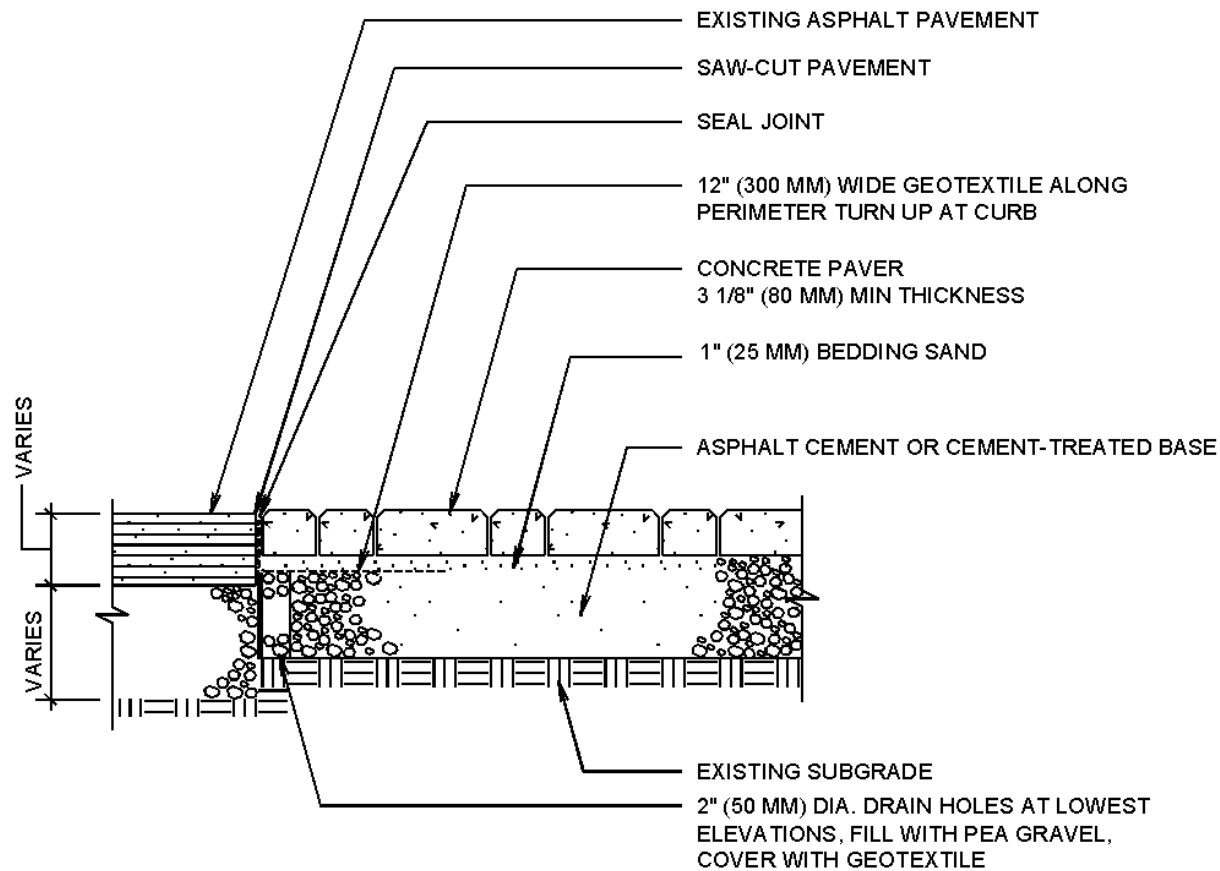


Crosswalk on Asphalt or Cement Treated Base



NOTES:

1. BASE THICKNESS VARIES WITH TRAFFIC, CLIMATE, AND SUBGRADE. COLDER CLIMATES AND WEAK SOIL MAY REQUIRE THICKER BASES.
2. BOTTOM ELEVATION OF EXISTING ASPHALT PAVEMENT MUST BE BELOW BEDDING SAND.
3. CONCRETE BEAMS AT ENDS OF PAVEMENT MAY BE NECESSARY IF ASPHALT IS SUBJECT TO RUTTING.
4. DO NOT PROVIDE DRAIN HOLES TO SUBGRADE WHEN WATER TABLE IS LESS THAN 2 FT. (0.6 M) FROM TOP OF SOIL SUBGRADE. PROVIDE DRAIN HOLES TO CATCH BASINS.
5. USE IN AREAS WITH CAR TRAFFIC ONLY.